



The Den, Fairyland Lane

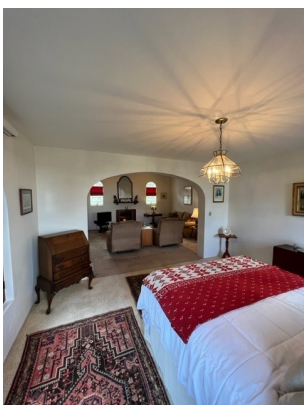
Pembroke

\$975,000

Ref: PW-291

ADORABLE COTTAGE FOR SALEFAIRYLANDS, PEMBROKENestled in a completely private and mature garden setting of 0.10 acres, this adorable cottage is a gem!Comprising an eat-in kitchen, bathroom with shower, semi-open plan dining room* and living room with open beamed ceiling and fireplace with a gorgeous Bermuda Cedar Dutch door leading out to a covered porch from which to enjoy the beautifully planted garden. *The dining room is presently set up (and depicted in the photographs) as a second bedroom; given it is adjacent to the second bathroom, it affords a perfect opportunity to utilize this space as a dedicated second bedroom with only minor modifications.There is a spiral staircase leading upstairs to the master suite, comprising a home office area, master bathroom with...

Gallery



Property Description

Location: 14 Fairyland Lane, Pembroke, Bermuda
ADORABLE COTTAGE
FOR SALE
FAIRYLANDS, PEMBROKE

Nestled in a completely private and mature garden setting of 0.10 acres, this adorable cottage is a gem!

Comprising an eat-in kitchen, bathroom with shower, semi-open plan dining room* and living room with open beamed ceiling and fireplace with a gorgeous Bermuda Cedar Dutch door leading out to a covered porch from which to enjoy the beautifully planted garden. *The dining room is presently set up (and depicted in the photographs) as a second bedroom; given it is adjacent to the second bathroom, it affords a perfect opportunity to utilize this space as a dedicated second bedroom with only minor modifications.

There is a spiral staircase leading upstairs to the master suite, comprising a home office area, master bathroom with tub and separate shower, walk-in closet and master bedroom. There is an additional closet, plumbed for a stacked washer/dryer.

On the lower ground floor there is a basement/storage area with full size washer and dryer.

Ideal investment property as the cottage will command an excellent rent, or suitable for a couple, single executive, or as a retirement cottage*. (*There is room to remove the spiral staircase and to instead build a standard staircase to the upper level.) Realistic offers will be considered.

Please call the Sole Agent today for an appointment to view: Sue Lusher 333-9138

BD\$975,000.00 gross

Additional Info

For Sale	Beds: 1	Baths: 2
Type: House	Land Area: 0.10 acres	Area: 1319 sq ft
Land Tax: \$1556	Private with mature garden	Fireplace
Open beamed ceiling		